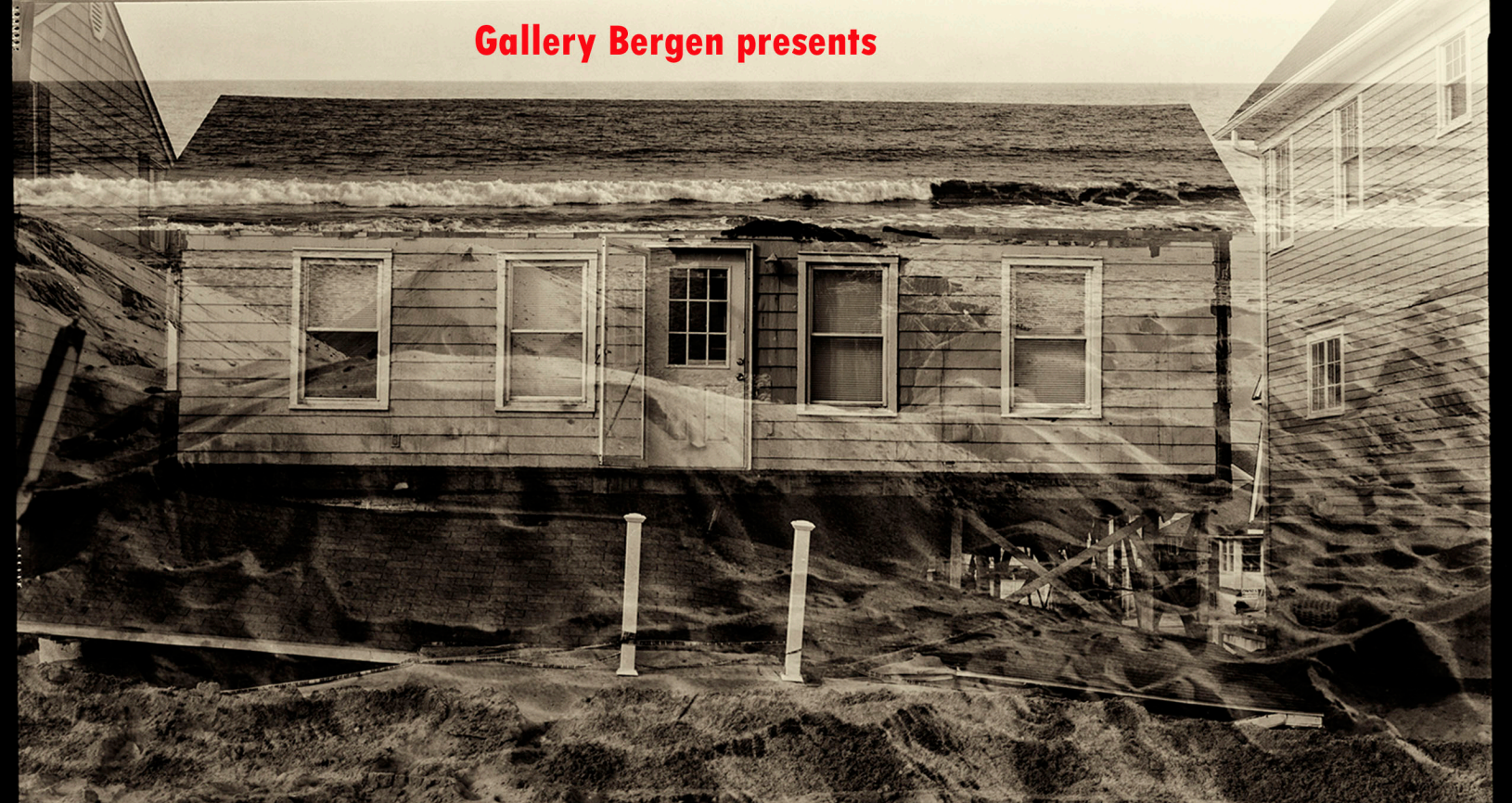


Gallery Bergen presents



Sandy: Artists Respond to a Once and Future Superstorm

Caitlin Albright; Scott Andresen;

Athena Azevedo, Vanessa Gonzalez-Bunster and TJ Volonis (Far Rockaway Dev. Fund Team 1);

Greg Brophy; Shari Epstein; Adam Farcus; Kathryn Frund; Judith Mazzucco;

Susannah Saylor & Edward Morris (The Canary Project); Rhoda Sidney

Curated by Professors Suzaan Boettger & Marriott Sheldon

Greg Brophy *Everything Collapsed*, 2012, digital inkjet print, 8x10" negative

On view October 1 - December 4, 2013

Reception Tuesday October 15, 5:30-7:30pm



Judith Mazzucco *The Essentials: My Glasses, Light and Perfume*,
Nov. 5, 2012, digital photograph

Panel discussion with artists:

Greg Brophy, Shari Epstein, Edward Morris

Tuesday October 22, 12:20-1:40pm, A-104

Curator's tour of exhibition:

Wednesday October 30 and Thursday November 7, 12:20pm

Lecture Tuesday November 12, 12:20pm-1:40pm A-104

Julie Reiss, Ph.D., "Global Connections:

Artists at the Venice Biennale Address Climate Change"

Bergen Community College, 400 Paramus Road, West Hall, Third Floor, Paramus, New Jersey 07652

For gallery hours and directions, see www.bergen.edu/gallerybergen